



Randolph Court, Mill Hill, NW7

£575,000

1093 SQ FT - An exceptionally well presented two double bedroom purpose built first floor flat with a lift situated in a gated development within walking distance from Mill Hill Broadway's shops and Thameslink station.

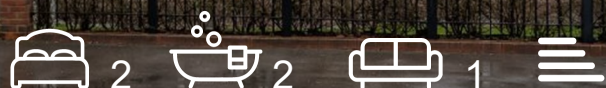
The flat is offered in immaculate condition and comprises of a stunning reception room, modern fitted kitchen, a master bedroom with en-suite additional double bedroom and a family bathroom.

Benefits include south facing Juliet balcony, entry phone system, secure underground parking and a long lease. Viewing Highly recommended. Sole Agent

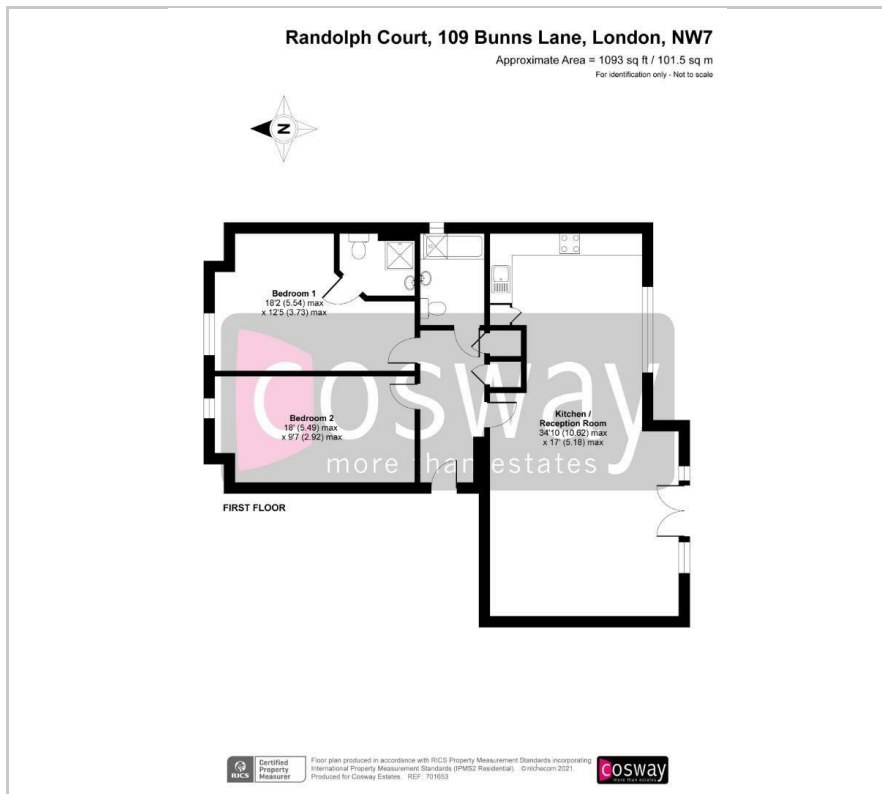
Viewing

Please contact our Mill Hill Office on 02089590011 if you wish to arrange a viewing appointment for this property or require further information.

- 1093 Sq Ft - LARGE 2 BEDROOM 2 BATHROOM APARTMENT
- EXCELLENT CONDITION
- MODERN FIXTURES THROUGHOUT
- PRIVATE GATED DEVELOPMENT
- ALLOCATED SECURE PARKING
- WALKING DISTANCE TO MILL HILL BROADWAY
- STUNNING OPEN PLAN LIVING
- LIFT



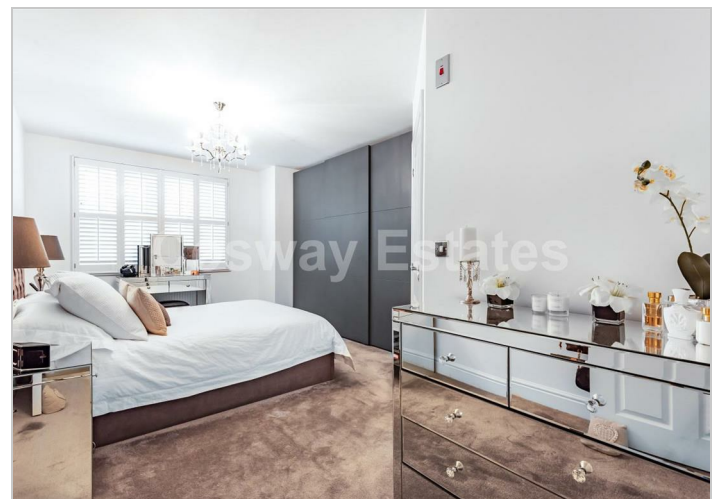
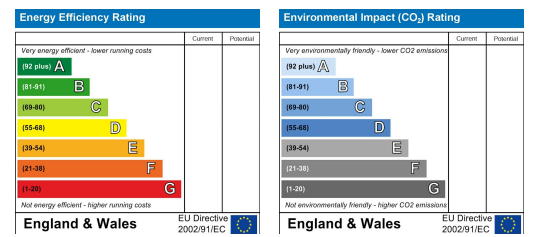
Floor Plan



Area Map



Energy Efficiency Graph



These particulars, whilst believed to be accurate are set out as a general outline only for guidance and do not constitute any part of an offer or contract. Intending purchasers should not rely on them as statements of representation of fact, but must satisfy themselves by inspection or otherwise as to their accuracy. No person in this firm's employment has the authority to make or give any representation or warranty in respect of the property.